

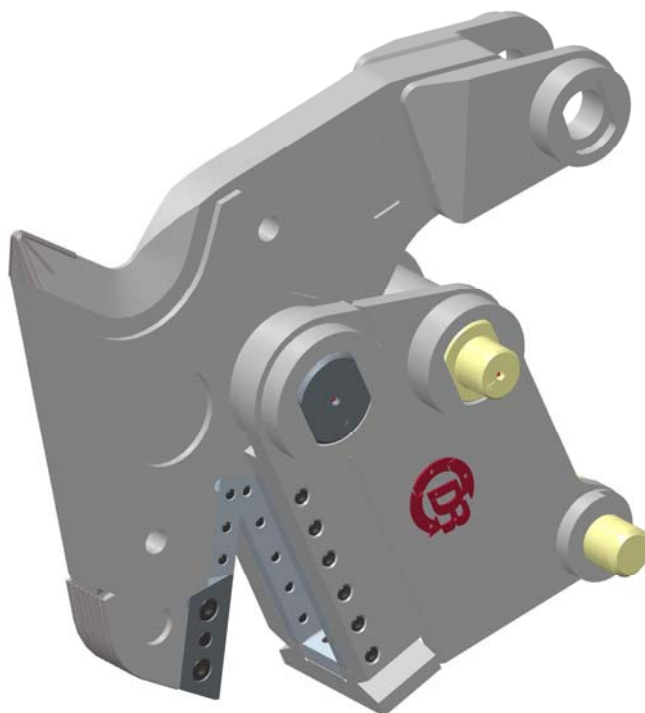


Partsbook

for

Multi Quick Processor Tank shear jaw MQP-30-T

| Product | Part Number | Ref. |
|------------------|--------------|------|
| MQP-30-T Serie 2 | MQP30T155AAA | |



Partsbook_mqp30t155aaa-c.docx

November 2013

Demarec Demolition and Recycling Equipment BV

Den Hoek 10, 5845 EL St. Anthonis, Netherlands

TEL.
FAX

+31 (0) 485 442300
+31 (0) 485 442120

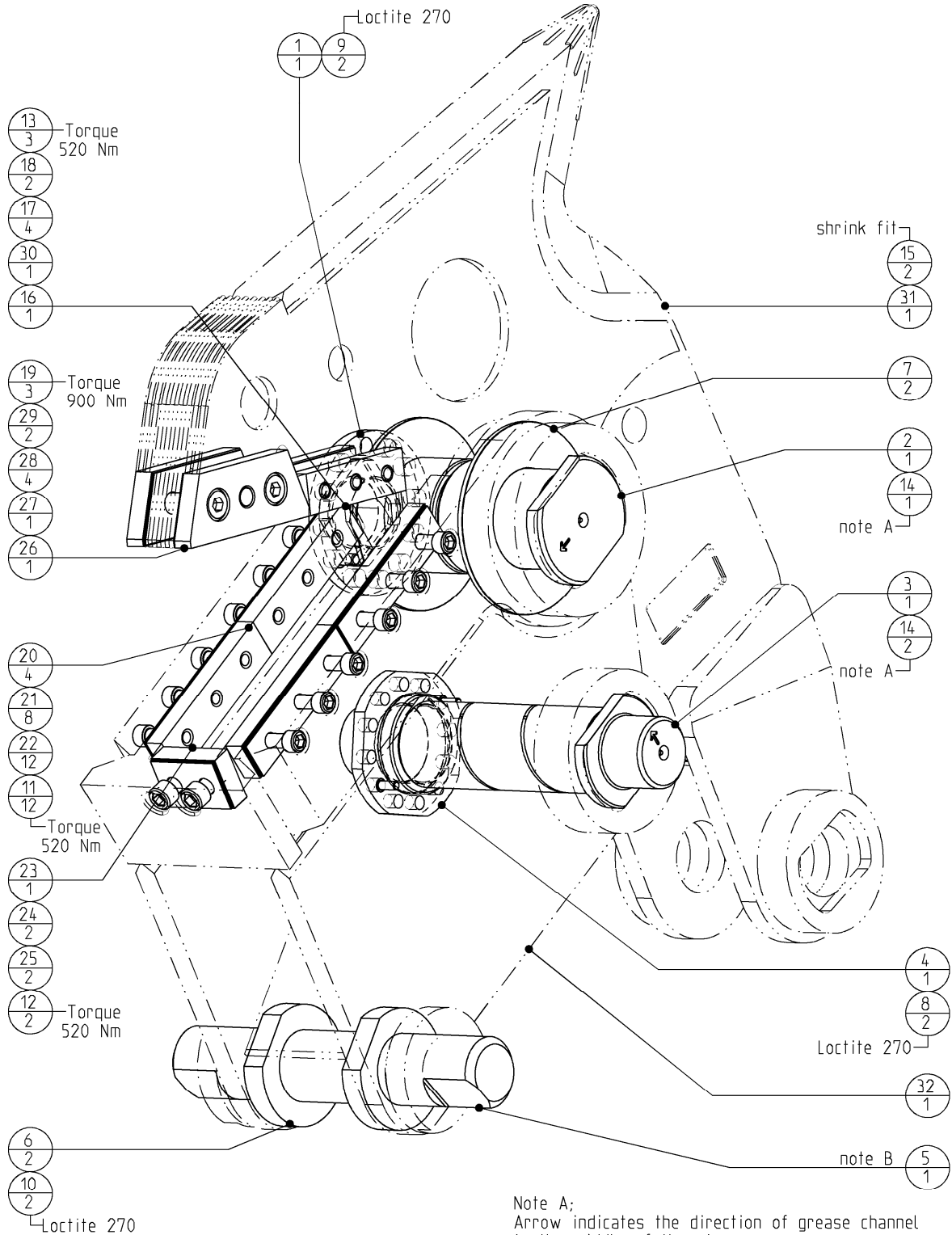
INTERNET
E-MAIL

www.demarec.com
info@demarec.com

Multi Quick Processor

| | | | |
|--------------|----------------|----|---|
| Page | 1 | of | 4 |
| Date | November 2013 | | |
| Product type | MQP-30-T | | |
| Number | MQP30T155AAA-C | | |

Jaw GP



Parts marked with a letter in column "Set" can be ordered as a set with Itemnumber

| Set | Wearpartset | Itemnumber |
|-----|----------------|------------|
| a | Shearblade set | 403658 |

Note A;
Arrow indicates the direction of grease channel in the middle of the pin.

Note B;
Orient wedge surfaces of rearpin 402052 with the help of MQP-30 pin fixture (402269).

Order of endassembly;

- # Fill clearance between upper- and lowerjaw to zero with shims 9.5, 10 or 10.5mm.
- # Mount Locknut tight and lock with bolt 500258.
- # Zero clearance between shearblades means 2mm space nominal for shims behind shear blades in upperjaw, and 4,5mm in lowerjaw.

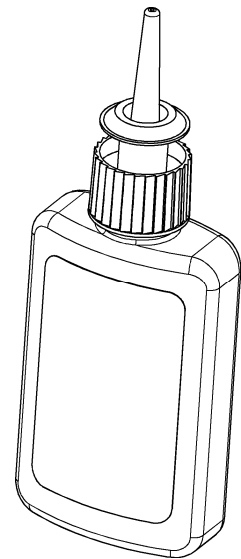
| | | | | |
|-----------------------|--------------|----------------|----|---|
| Multi Quick Processor | Page | 2 | of | 4 |
| | Date | November 2013 | | |
| | Product type | MQP-30-T | | |
| Jaw GP | Number | MQP30T155AAA-C | | |

| | | | | |
|------------|------------|-------------------|----------------------------------|-----------|
| | 32 | 715057942 | Jaw - lower asm. machined | 1 |
| | 31 | 713057859 | Jaw - upper asm. machined | 1 |
| a | 30 | 508057 | Shearblade - straight contra | 1 |
| a | 29 | 508050 | Shim - trapezium | 2 |
| a | 28 | 508049 | Shim - trapezium | 4 |
| a | 27 | 508048 | Shear - blade trapezium LH | 1 |
| a | 26 | 508047 | Shear - blade trapezium RH | 1 |
| a | 25 | 508019 | Shim - straight | 2 |
| a | 24 | 508018 | Shim - straight | 2 |
| a | 23 | 508017 | Shearblade - straight | 1 |
| a | 22 | 508003 | Shim - straight | 12 |
| a | 21 | 508002 | Shim - straight | 8 |
| a | 20 | 508001 | Shearblade - straight | 4 |
| a | 19 | 506023 | Shoulder bolt | 3 |
| a | 18 | 500952 | Shim - straight | 2 |
| a | 17 | 500951 | Shim - straight | 4 |
| a | 16 | 500950 | Shearblade - straight | 1 |
| | 15 | 500573 | Bushing | 2 |
| | 14 | 500560 | Grease - nipple | 3 |
| a | 13 | 500378 | Flat countersunk head cap screws | 3 |
| a | 12 | 500281 | Hex. socket head cap screw | 2 |
| a | 11 | 500274 | Hex. socket head cap screw | 12 |
| | 10 | 500262 | Hex. socket head cap screw | 2 |
| | 9 | 500258 | Hex. socket head cap screw | 2 |
| | 8 | 500247 | Hex. socket head cap screw | 2 |
| | 7 | 402482 | Spacer | 2 |
| | 6 | 402053 | Ring - clamp | 2 |
| | 5 | 402052 | Pin | 1 |
| | 4 | 402051 | Locknut M110x4 | 1 |
| | 3 | 402050 | Pin | 1 |
| | 2 | 401546 | Pin | 1 |
| | 1 | 401312 | Locknut | 1 |
| Set | POS | PARTNUMBER | PARTNAME | QT |

| | | | | |
|-----------------------|--------------|---------------|----|---|
| Multi Quick Processor | Page | 3 | of | 4 |
| | Date | November 2013 | | |
| | Product type | MQP-30-T | | |
| Additional parts | Number | n.a. | | |

Chemical lock

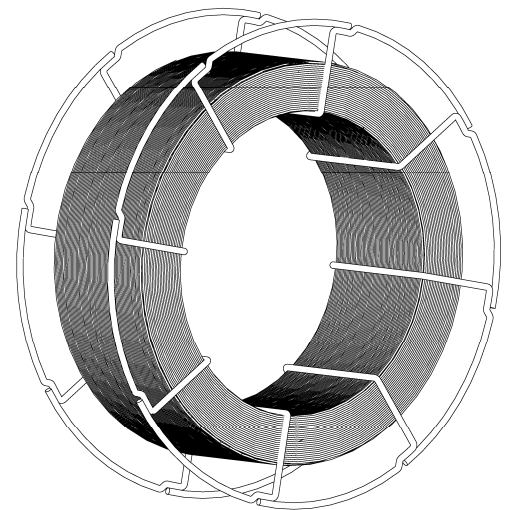
| | | |
|-------------------|--------------------------|-----------|
| 195050158 | Cyberbond TT62 Pumpgel | 1 |
| 506018 | Loctite 480 Flacon 20 gr | 1 |
| 506017 | Loctite 638 Flacon 50 ml | 1 |
| 506016 | Loctite 270 Flacon 50 ml | 1 |
| PARTNUMBER | PARTNAME | QT |



MAG welding wire

- for hard facing cutting blades
- 48-52 HRc

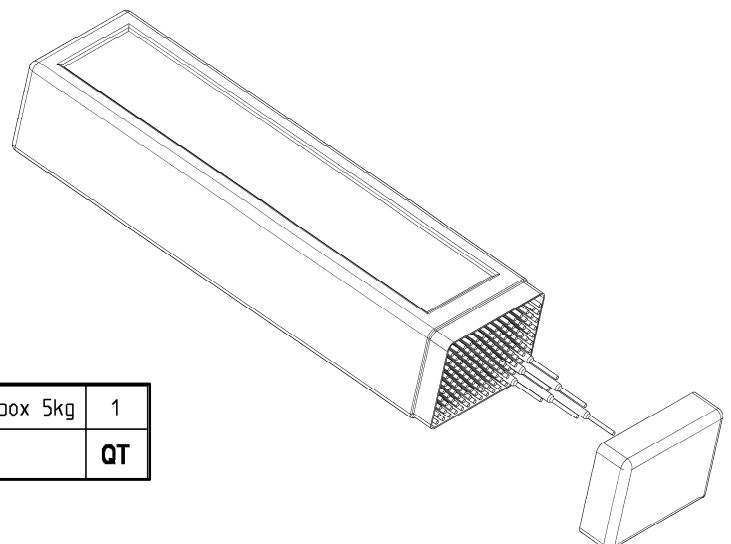
| | | |
|-------------------|-------------------------------------|-----------|
| 501237 | Welding wire MAG; 1.8425, coil 15kg | 1 |
| PARTNUMBER | PARTNAME | QT |



Welding electrodes

- for hard facing cutting blades
- 48-52 HRc

| | | |
|-------------------|--|-----------|
| 501238 | Weld. electr.:1.8425, Ø 2.5mm, box 5kg | 1 |
| PARTNUMBER | PARTNAME | QT |



| | | | | |
|-----------------------|--------------|---------------|----|---|
| Multi Quick Processor | Page | 4 | of | 4 |
| | Date | November 2013 | | |
| | Product type | MQP-30-T | | |
| Instructions | Number | n.a. | | |

Mounting instructions for Cyberbound TT 62

This instruction shall guarantee that all hydraulic fittings and cartridges will be mounted and glued in correctly.

Procedure:

Clean and degrease thoroughly all components with a special cleaner for anaerobic adhesives (e.g. Loctite cleaner 7063) or acetone.

Apply on the outside thread only a bead of Cyberbond TT62 pump gel to approx. 2/3 of the girth of the second thread for fittings up to a diameter of 20mm or to the entire girth for fittings with a diameter larger than 20mm.



Cyberbound
TT 62



Clean from adhesive residues pressed out from the bore hole after fitting.

ATTENTION. The sealings shall be free of adhesive residues!

Tighten fittings with given fastening torques.

Standard torque values for bolts (when not indicated)

| Thread size | Torque (Nm) for quality | | |
|-------------|-------------------------|--------|--------|
| | 8.8 | 10.9 | 12.9 |
| M8 | 22,5 | 32,4 | 38,7 |
| M10 | 45,0 | 63,0 | 75,6 |
| M12 | 77,4 | 109,0 | 131,0 |
| M16 | 194,0 | 270,0 | 324,0 |
| M20 | 369,0 | 522,0 | 630,0 |
| M24 | 639,0 | 900,0 | 1080,0 |
| M27 | 945,0 | 1305,0 | 1575,0 |
| M30 | 1260,0 | 1800,0 | 2160,0 |



DEMAREC AND KINSHOFER WORLDWIDE

Netherlands:

Demarec

Demolition and Recycling Equipment BV

Den Hoek 10

5845 EL St. Anthonis

Netherlands

TEL. +31 (0) 485 442300

FAX +31 (0) 485 442120

Email:

info@demarec.com

United Kingdom:

Kinshofer UK Ltd.

4 Milton Industrial Court,

Horsfield Way, Bredbury

Stockport, Cheshire, SK6 2TA

United Kingdom

TEL. +44 (0) 161 - 406 7046

FAX +44 (0) 161 - 406 7014

Email:

sales@kinshofer.co.uk

France:

Kinshofer France S.A.R.L.

B.P. 20100

67213 Obernai Cedex

France

TEL. +33 (0) 388 39 55 00

FAX +33 (0) 388 79 06 75

Email:

info@kinshofer.fr

Czech Republic:

Kinshofer CZ s.r.o.

Cs. Legii 568

37810 Ceske Velenice

Czech Republic

TEL. +420 384 – 795 110

FAX +420 384 – 795 120

Headquarters:

Germany:

Kinshofer GmbH

Hauptstrasse 76

83666 Waakirchen

Germany

TEL. +49 (0) 8021 – 88 99 0

FAX +49 (0) 8021 – 88 99 37

Email:

info@kinshofer.com

North America:

Kinshofer North America

5040 Mainway Drive, Unit 11

Burlington, ON L7L 7G5

Canada

TEL. +1 (905) 335 2856

FAX +1 (905) 335 4529

Toll Free in Canada and USA:

TEL. 1-800-268-9525

Email:

sales-northamerica@kinshofer.com

Finland:

Kinshofer Aponox Oy

Terminaalitie 10

13430 Hämeenlinna

Finland

TEL. +358 (0)75 7540 200

FAX +358 (0)75 7540 210

Beijing:

Darda Kinshofer

Construction Machinery Co. Ltd.

Unit #306, Landmark Tower 2

8 Dongsanhuan Road

Beijing 100004

China

TEL. +86 (10) 6590 6422

FAX +86 (10) 6590 6423

Email:

info@darda.com.cn