

Parts book

| Product type |
|----------------|
| DLD-45 Serie 1 |



Den Hoek 10
5845 EL St. Anthonis
the Netherlands
Telephone +31 (0)485 442300
Fax +31 (0)485 442120

info@demarec.com
www.demarec.com



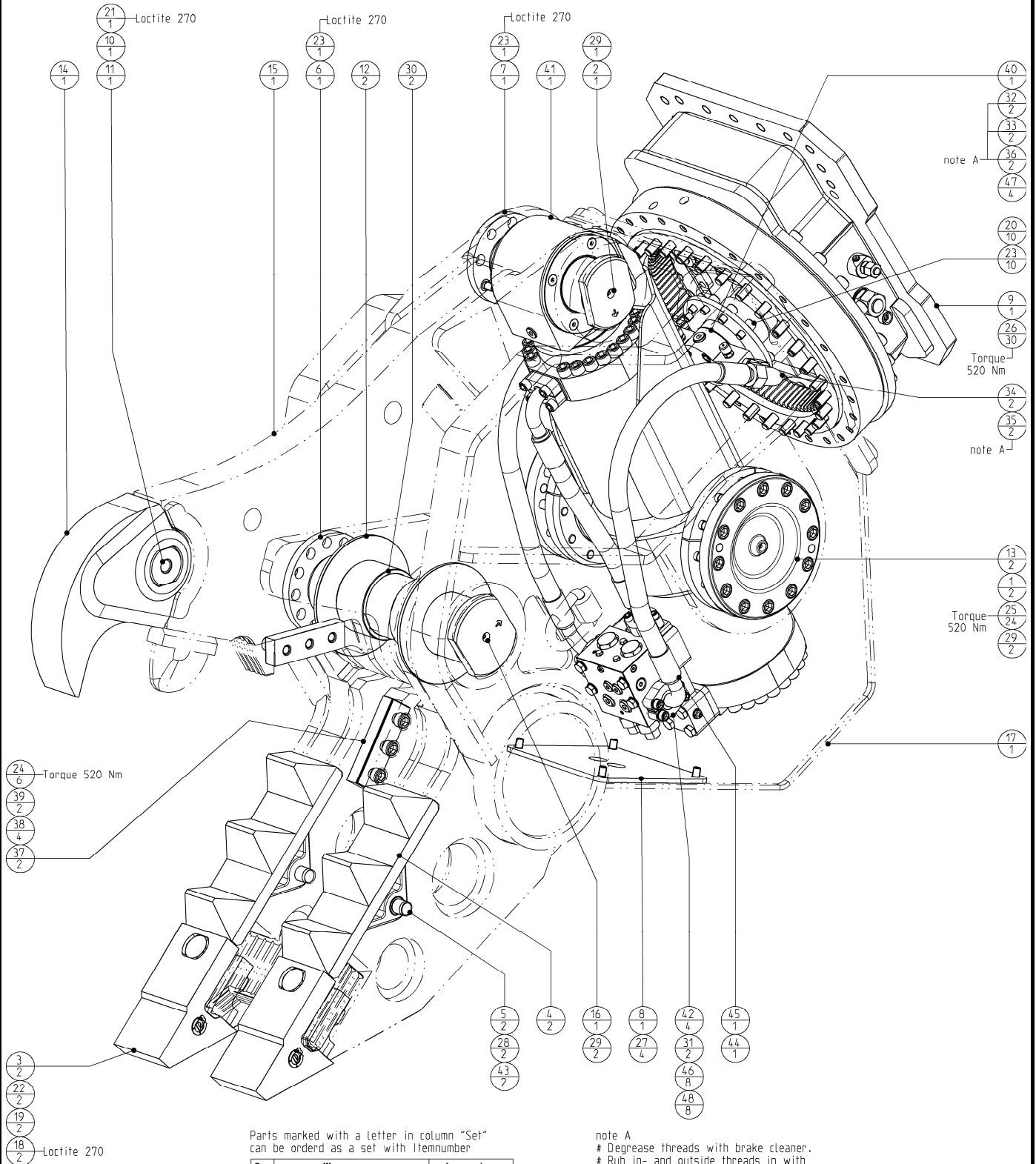
*Copyright Demolition and Recycling Equipment BV
All rights strictly reserved.
Reproductions to third parties in any form whatever is not permitted
without written authority from the proprietor*

Partsbook_404585-01.doc

Rotatable Demolition Shear

Housing GP

| | | | |
|--------------|----------------------------|----|----|
| Page | 1 | of | 17 |
| Date | August 2010 | | |
| Product type | DLD-45 | | |
| Number | DLD45L095AAA5 404585-01 | | |



Parts marked with a letter in column "Set" can be ordered as a set with itemnumber

| Set | Wearpartset | Itemnumber |
|-----|-----------------------------|------------|
| a | Tripod shroud set | 402820 |
| b | Cuttingedges set | 402821 |
| c | Scraper teeth set | 402818 |
| d | Rippertooth set (excl. pin) | 402842 |

note A

- # Degrease threads with brake cleaner.
- # Rub in- and outside threads in with Cyberbound TT62 by using a brush.
- # Clean seal from plug during screwing in.
- # A drying time from the glue of at least 1 hour needs to be respected before if has any contact with oil.

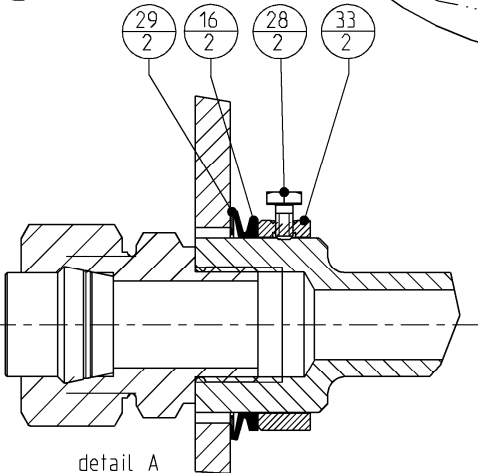
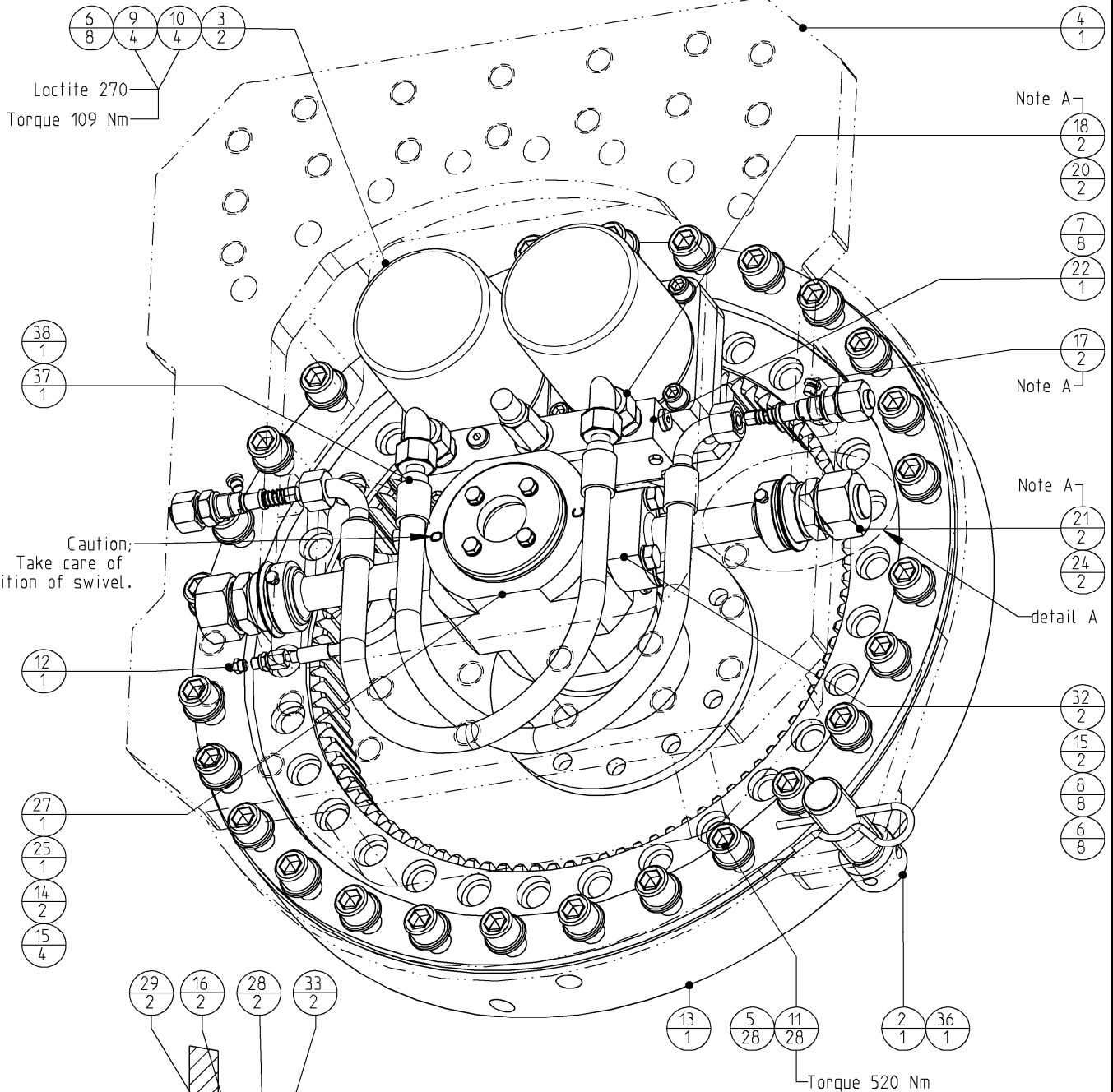
| | | | | |
|---------------------------------------|--------------|------------------------------------|----|-----------|
| Rotatable Demolition Shear | Page | 2 | of | 17 |
| | Date | August 2010 | | |
| | Product type | DLD-45 | | |
| Housing GP | Number | DLD45L095AAA5 404585-01 | | |

| | | | | | | 25 | 500276 | Hex. socket head cap screw | 24 |
|---|----|----------------|----------------------------------|----|------------|------------|-------------------|----------------------------|-----------|
| | | | | | b | 24 | 500271 | Hex. socket head cap screw | 6 |
| | 48 | 122012249 | Washer hex.sckt head | 8 | | 23 | 500258 | Hex. socket head cap screw | 12 |
| | 47 | 506021 | Hex. socket head cap screw | 4 | c | 22 | 500201 | Bolts Hexagon | 2 |
| | 46 | 506005 | Hex. socket head cap screw | 8 | d | 21 | 500144 | Bolts Hexagon | 1 |
| | 45 | 505005_RH_VG11 | Hydr. hose asm. 1" SAE 100R13 | 1 | | 20 | 500069 | Washer spring | 10 |
| | 44 | 505005_LH_VG11 | Hydr. hose asm. 1" SAE 100R13 | 1 | c | 19 | 500058 | Washer HV | 2 |
| a | 43 | 504053 | O-ring | 2 | c | 18 | 500009 | Nut Hexagon | 2 |
| | 42 | 503504 | SAE split-flange | 4 | | 17 | 404592 | Housing asm. machined | 1 |
| | 41 | 502720 | Hydraulic Cylinder & Valve GP | 1 | | 16 | 404584 | Pin | 1 |
| | 40 | 501035 | Swivel - flange | 1 | | 15 | 403825 | Jaw - upper asm. | 1 |
| b | 39 | 500952 | Shim - straight | 2 | d | 14 | 402922 | Ripper - tooth | 1 |
| b | 38 | 500951 | Shim - straight | 4 | | 13 | 402918 | Bearing housing | 2 |
| b | 37 | 500950 | Shear - blade straight | 2 | | 12 | 402482 | Spacer | 2 |
| | 36 | 500740 | Test-point | 2 | | 11 | 402163 | Lock - pin | 1 |
| | 35 | 500698 | Male stud coupling | 2 | d | 10 | 401965 | Lock - cover | 1 |
| | 34 | 500676 | Adjustable male stud elbow | 2 | | 9 | 401766 | Rotatorhead GP | 1 |
| | 33 | 500653 | Blanking end | 2 | | 8 | 401723 | Cover | 1 |
| | 32 | 500652 | Blanking end | 2 | | 7 | 401313 | Locknut | 1 |
| | 31 | 500603 | O-ring | 2 | | 6 | 401312 | Locknut M100x4 | 1 |
| | 30 | 500573 | Bushing | 2 | a | 5 | 401311 | Lock - pin | 2 |
| | 29 | 500560 | Grease - nipple | 5 | a | 4 | 401194 | Shroud - tripod | 2 |
| a | 28 | 500559 | Tension bush - outside | 2 | c | 3 | 401193 | Tooth - scraper | 2 |
| | 27 | 500358 | Flat countersunk head cap screws | 4 | | 2 | 400726 | Pin | 1 |
| | 26 | 500302 | Hex. socket head cap screw | 30 | | 1 | 400722 | Ring | 2 |
| | | | | | Set | POS | PARTNUMBER | PARTNAME | QT |

Rotatable Demolition Shear

| | | | |
|--------------|--------------------|----|-----------|
| Page | 3 | of | 17 |
| Date | August 2010 | | |
| Product type | DLD-45 | | |
| Number | 401766-10 | | |

Rotatorhead GP



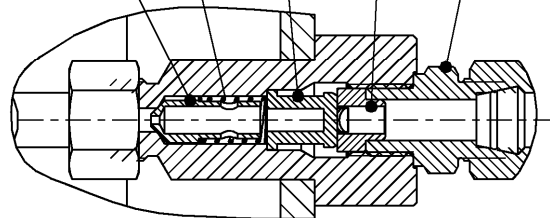
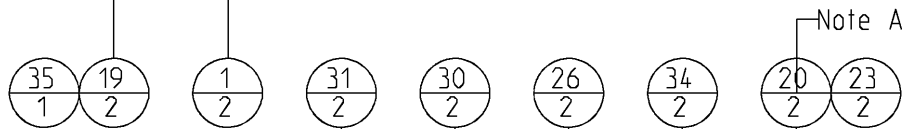
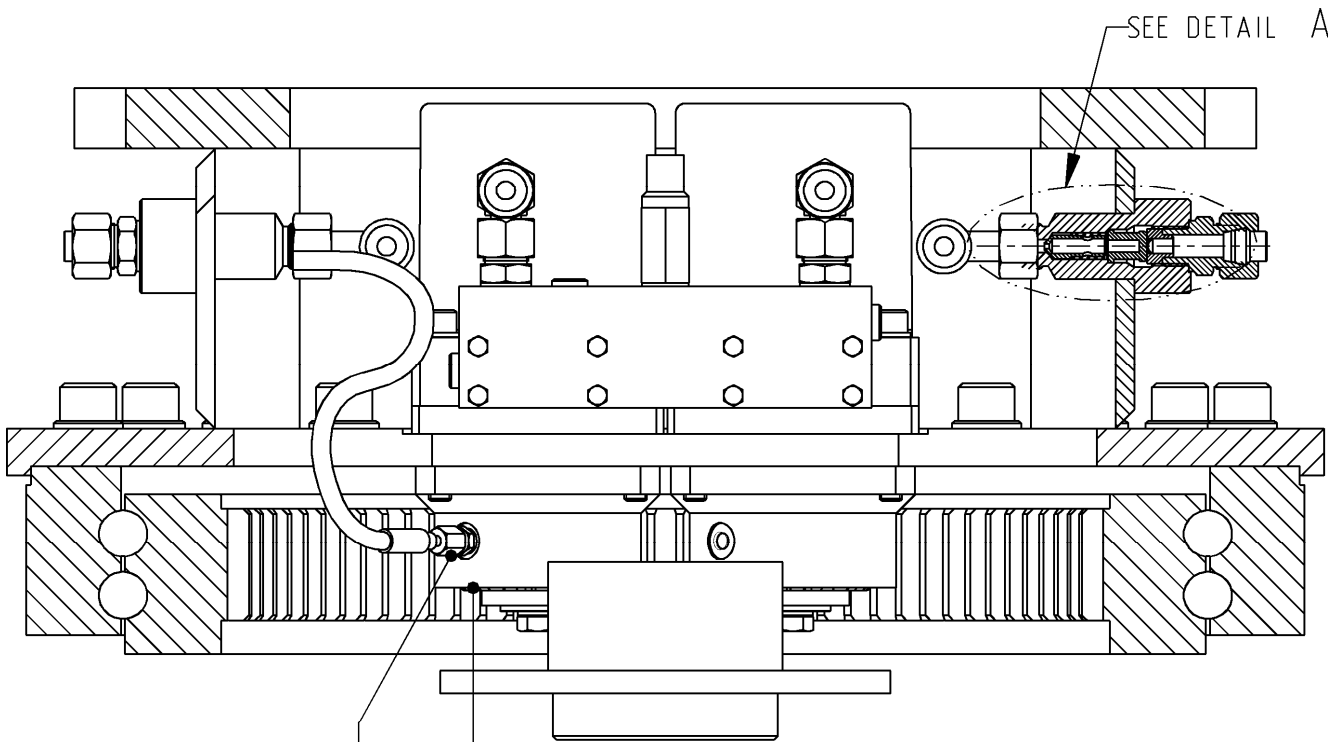
Note A

- # Degrease threads with brake cleaner.
- # Rub in- and outside threads in with Cyberbound TT62 by using a brush.
- # Clean seal from plug during screwing in.
- # A drying time from the glue of at least 1 hour needs to be respected before it has any contact with oil.

Rotatable Demolition Shear

| | | | |
|--------------|--------------------|----|-----------|
| Page | 4 | of | 17 |
| Date | August 2010 | | |
| Product type | DLD-45 | | |
| Number | 401766-10 | | |

Rotatorhead GP



DETAIL A

Note A

- # Degrease threads with brake cleaner.
- # Rub in- and outside threads in with Cyberbound TT62 by using a brush.
- # Clean seal from plug during screwing in.
- # A drying time from the glue of at least 1 hour needs to be respected before it has any contact with oil.

| | | | | |
|---------------------------------------|---------------------|--------------------|-----------|-----------|
| Rotatable Demolition Shear | <i>Page</i> | 5 | <i>of</i> | 17 |
| | <i>Date</i> | August 2010 | | |
| | <i>Product type</i> | DLD-45 | | |
| Rotatorhead GP | <i>Number</i> | 401766-10 | | |

| | | | | | | | |
|--|--|--|--|--|--|--|--|
| | | | | | | | |
|--|--|--|--|--|--|--|--|

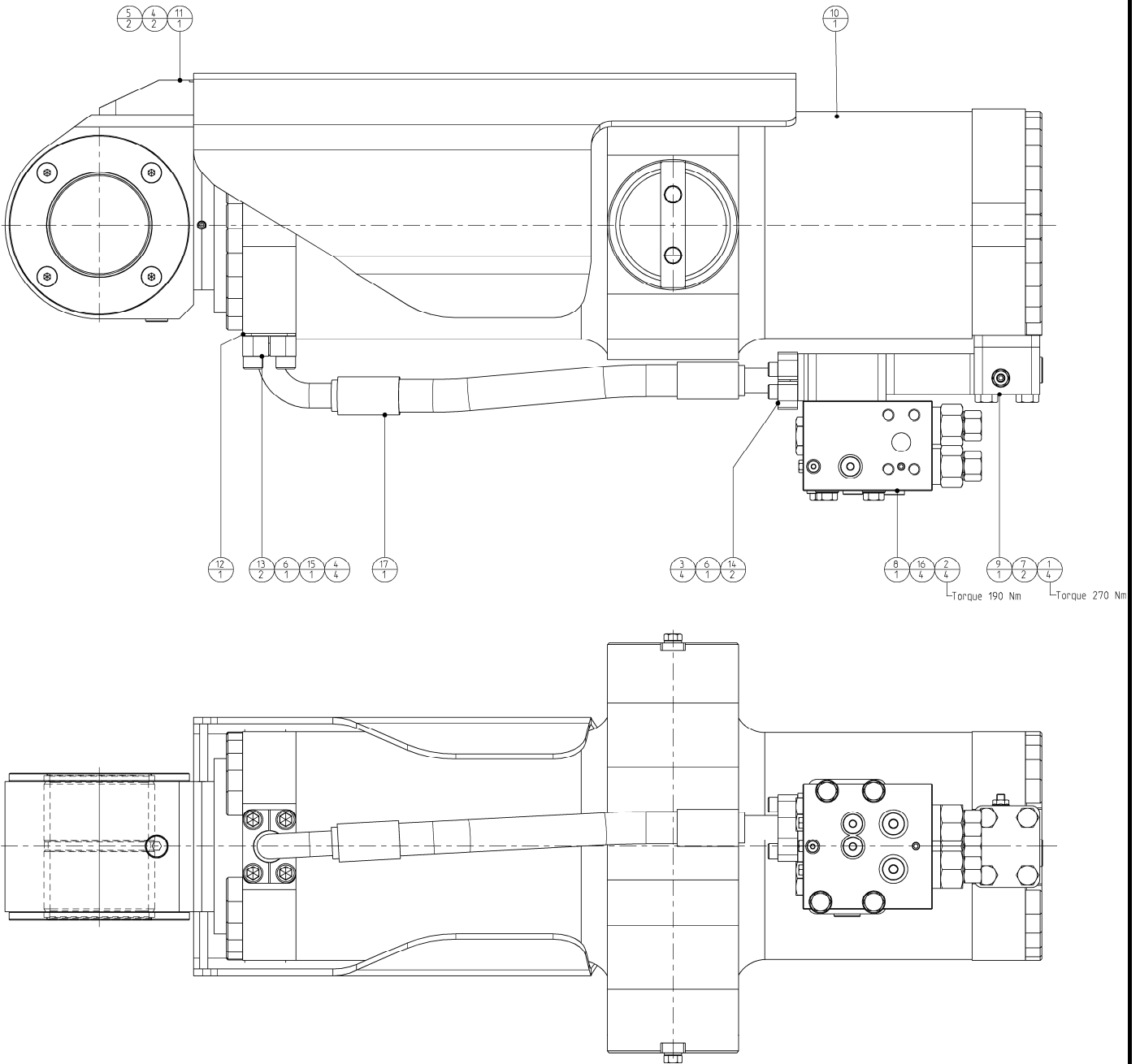
| | | | | | | | |
|----|----------------|-----------------------------------|---|----|--------|-----------------------------|----|
| 38 | 500840_VG02 | Hydr. hose asm. 1/2" SAE 100 R2AT | 1 | 19 | 500690 | Male stud coupling | 2 |
| 37 | 500840_VG01 | Hydr. hose asm. 1/2" SAE 100 R2AT | 1 | 18 | 500673 | Adjustable male stud elbow | 2 |
| 36 | 500504-3 | Locking pin (hair-pin) | 1 | 17 | 500649 | Blanking end | 2 |
| 35 | 296012429_VG01 | Hydr. hose asm. 3/16" SAE 100R1AT | 1 | 16 | 500621 | Seal | 2 |
| 34 | 773058645 | Drossel - ring | 2 | 15 | 500601 | O-ring | 6 |
| 33 | 773057512 | Ring - adjusting | 2 | 14 | 500600 | O-ring | 2 |
| 32 | 773056990 | Hydraulic flange - pipe | 2 | 13 | 500591 | Stewing Ring; Internal Gear | 1 |
| 31 | 273058601 | Cone - valve + restriction | 2 | 12 | 500560 | Grease - nipple | 1 |
| 30 | 165050749 | Spring | 2 | 11 | 500302 | Hex. socket head cap screw | 28 |
| 29 | 122010270 | Ring - shim | 2 | 10 | 500255 | Hex. socket head cap screw | 4 |
| 28 | 120014016 | Bolts Hexagon | 2 | 9 | 500253 | Hex. socket head cap screw | 4 |
| 27 | 502286 | Swivel GP | 1 | 8 | 500135 | Bolts Hexagon | 8 |
| 26 | 502000 | Filter | 2 | 7 | 500099 | Bolts Hexagon | 8 |
| 25 | 501074 | Swivel - Flange Intermed. | 1 | 6 | 500068 | Washer spring | 16 |
| 24 | 500948 | Blanking plug | 2 | 5 | 500055 | Washer HV | 28 |
| 23 | 500945 | Blanking plug | 2 | 4 | 401356 | Rotatorhead asm. machined | 1 |
| 22 | 500758 | Valve GP | 1 | 3 | 401201 | Motor GP | 2 |
| 21 | 500698 | Male stud coupling | 2 | 2 | 400066 | Lock - pin | 1 |
| 20 | 500693 | Male stud coupling | 4 | 1 | 400063 | Cap - Pinion | 2 |

| POS | PARTNUMBER | PARTNAME | QT |
|-----|------------|----------|----|
| | | | |

Rotatable Demolition Shear

| | | | |
|--------------|--------------------|----|-----------|
| Page | 6 | of | 17 |
| Date | August 2010 | | |
| Product type | DLD-45 | | |
| Number | 502720-00 | | |

Cylinder & Valve GP



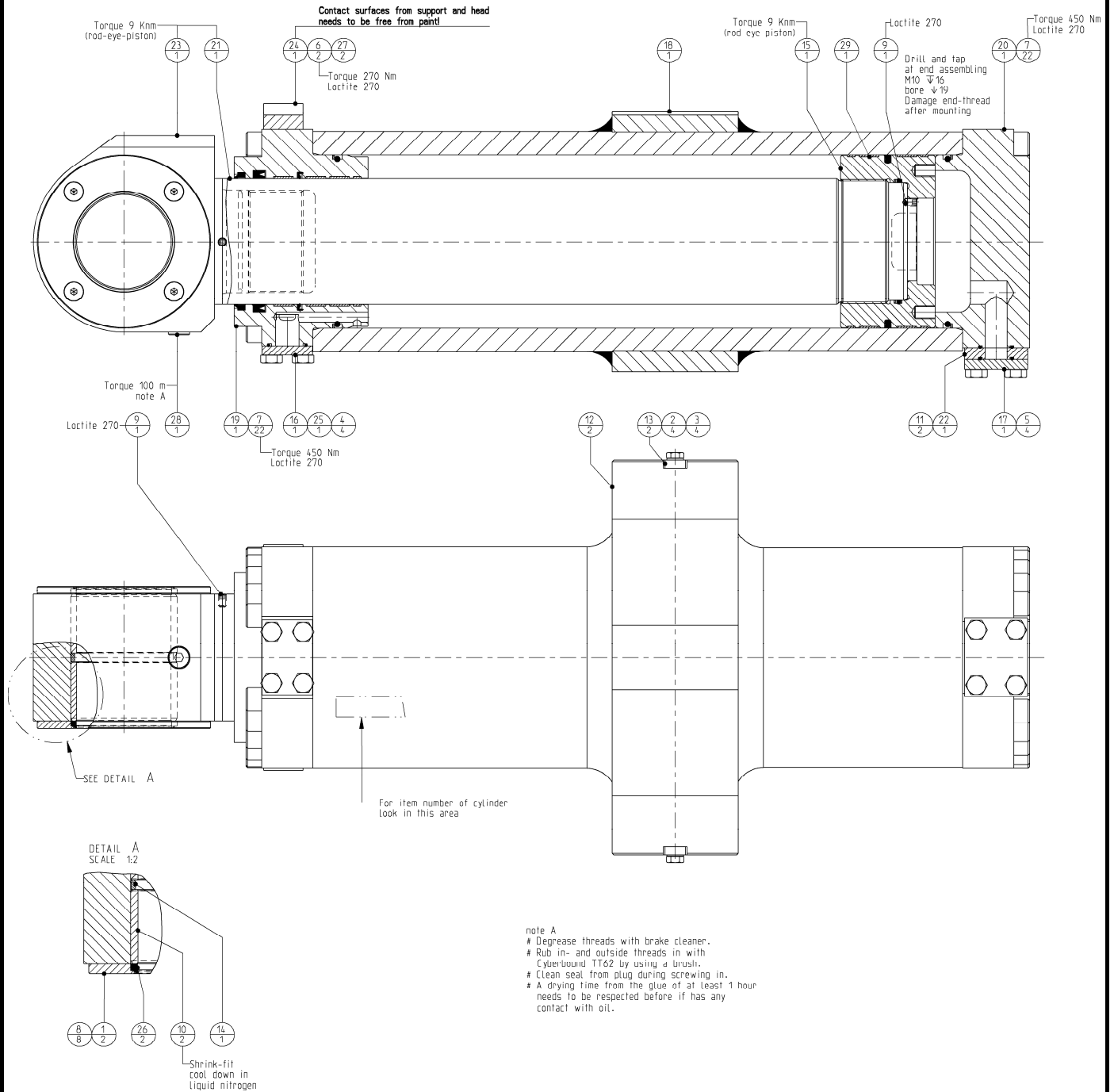
| | | | | |
|---------------------------------------|---------------------|--------------------|-----------|-----------|
| Rotatable Demolition Shear | <i>Page</i> | 7 | <i>of</i> | 17 |
| | <i>Date</i> | August 2010 | | |
| | <i>Product type</i> | DLD-45 | | |
| Cylinder & Valve GP | <i>Number</i> | 502720-00 | | |

| | | | |
|------------|-------------------|-------------------------------|-----------|
| 17 | 505090_RM502720 | Hydr. hose asm. 1" SAE 100R13 | 1 |
| 16 | 122000163 | Washer normal | 4 |
| 15 | 504009 | O-ring | 1 |
| 14 | 503503 | SAE split - flange | 2 |
| 13 | 502730 | Split - flange spec. | 2 |
| 12 | 502729 | Flange - intermed. | 1 |
| 11 | 502723 | Protection cap asm. | 1 |
| 10 | 502721 | Hydraulic cylinder GP | 1 |
| 9 | 502559 | Flange - bottom GP | 1 |
| 8 | 500755 | Overcentre valve | 1 |
| 7 | 500603 | O-ring | 2 |
| 6 | 500601 | O-ring | 2 |
| 5 | 500265 | Hex. socket head cap screw | 2 |
| 4 | 500262 | Hex. socket head cap screw | 6 |
| 3 | 500250 | Hex. socket head cap screw | 4 |
| 2 | 500200 | Bolts Hexagon | 4 |
| 1 | 500151 | Bolts Hexagon | 4 |
| POS | PARTNUMBER | PARTNAME | QT |

Rotatable Demolition Shear

Cylinder GP

| | | | |
|--------------|--------------------|----|-----------|
| Page | 8 | of | 17 |
| Date | August 2010 | | |
| Product type | DLD-45 | | |
| Number | 502721-00 | | |



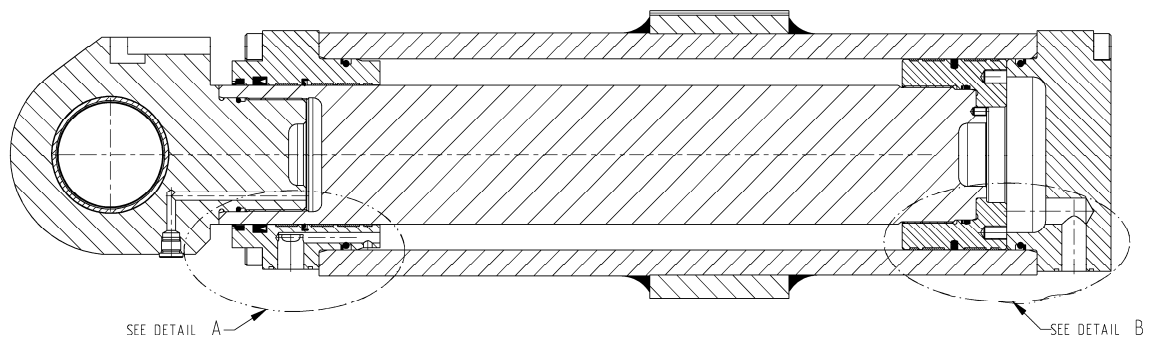
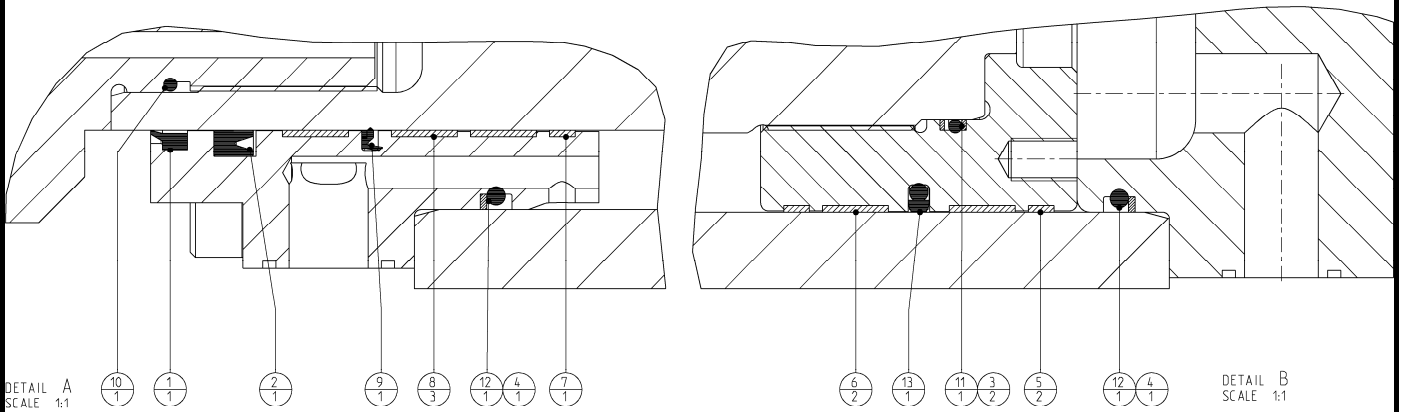
| | | | | |
|---------------------------------------|---------------------|--------------------|-----------|-----------|
| Rotatable Demolition Shear | <i>Page</i> | 9 | <i>Of</i> | 17 |
| | <i>Date</i> | August 2010 | | |
| | <i>Product type</i> | DLD-45 | | |
| Cylinder GP | <i>Number</i> | 502721-00 | | |

| | | | |
|------------|-------------------|----------------------------------|-----------|
| 29 | 502576_RM502721 | Seal - set | 1 |
| 28 | 290058184 | Blanking end ISO 6149 | 1 |
| 27 | 506033 | Lockwasher - Schnorr | 2 |
| 26 | 504020 | Scraper | 2 |
| 25 | 504009 | O-ring | 1 |
| 24 | 502728 | Support - protection cap | 1 |
| 23 | 502722 | Rod - eye | 1 |
| 22 | 502575 | Flange - intermediate | 1 |
| 21 | 502573 | Rod | 1 |
| 20 | 502572 | Cylinder - bottom | 1 |
| 19 | 502399 | Cylinder - head | 1 |
| 18 | 502392 | Cylinder - house asm. | 1 |
| 17 | 502259 | Blanking cover | 1 |
| 16 | 502253 | Blanking cover | 1 |
| 15 | 502200 | Piston | 1 |
| 14 | 501021 | Spacer | 1 |
| 13 | 501016 | Lockplate | 2 |
| 12 | 501015 | Bearing | 2 |
| 11 | 500603 | O-ring | 2 |
| 10 | 500572 | Bushing | 2 |
| 9 | 500417 | Hex. socket set screw | 2 |
| 8 | 500347 | Flat countersunk head cap screws | 8 |
| 7 | 500277 | Hex. socket head cap screw | 44 |
| 6 | 500260 | Hex. socket head cap screw | 2 |
| 5 | 500146 | Bolts Hexagon | 4 |
| 4 | 500144 | Bolts Hexagon | 4 |
| 3 | 500133 | Bolts Hexagon | 4 |
| 2 | 500068 | Washer spring | 4 |
| 1 | 401725 | Spacer | 2 |
| POS | PARTNUMBER | PARTNAME | QT |

Rotatable Demolition Shear

Sealset

| | | | |
|--------------|--------------------|----|-----------|
| Page | 10 | Of | 17 |
| Date | August 2010 | | |
| Product type | DLD-45 | | |
| Number | 502576-00 | | |



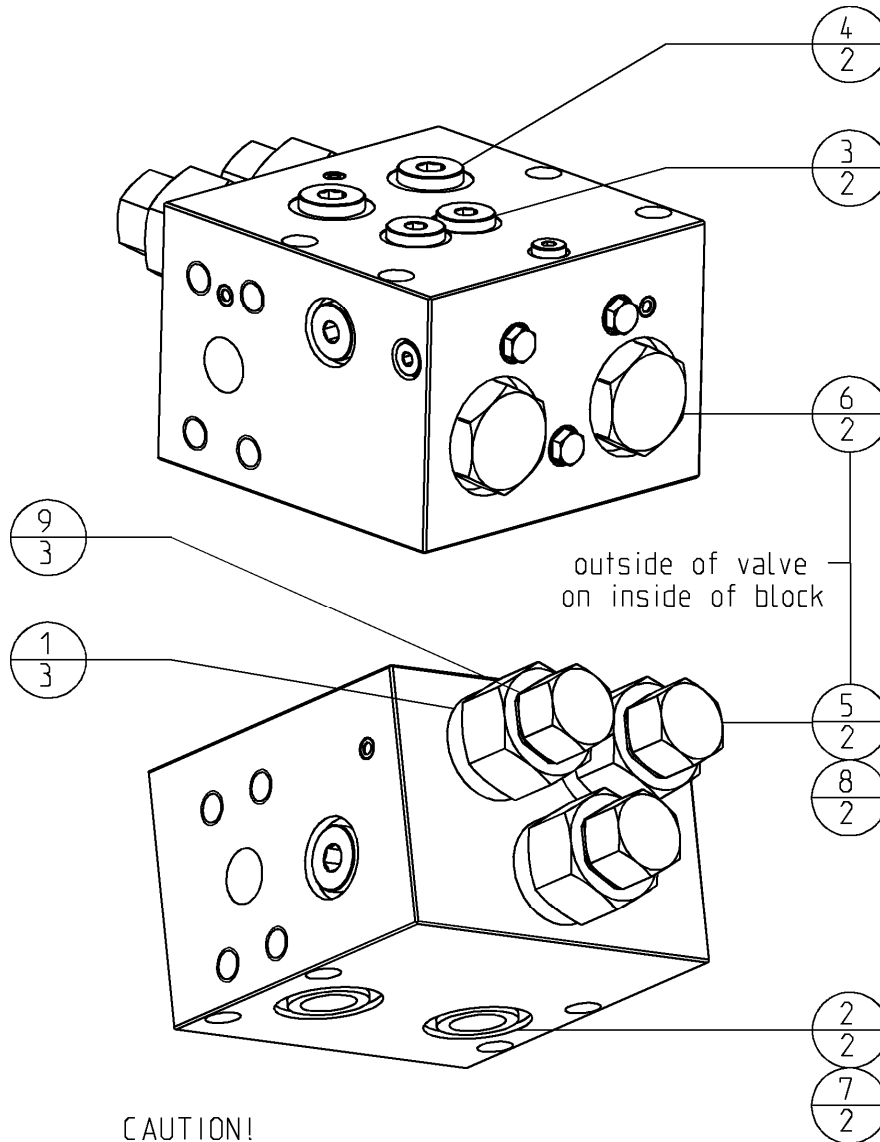
| | | | | |
|---------------------------------------|---------------------|--------------------|-----------|-----------|
| Rotatable Demolition Shear | <i>Page</i> | 11 | <i>of</i> | 17 |
| | <i>Date</i> | August 2010 | | |
| | <i>Product type</i> | DLD-45 | | |
| Sealset | <i>Number</i> | 502576-00 | | |

| Partslist sealset 502576-00 | | | |
|------------------------------------|-------------------|-------------------|-----------|
| 13 | PT0402200 | Turcon Glydring T | 1 |
| 12 | ORAR00445 | O-ring | 2 |
| 11 | OR5015000 | O-ring | 1 |
| 10 | OR5012000 | O-ring | 1 |
| 9 | IBF160 | Rod seal GP | 1 |
| 8 | GR7501600 | Bearing Luytex | 3 |
| 7 | GR6901600 | Bearing Turcite | 1 |
| 6 | GP7502200 | Bearing Luytex | 2 |
| 5 | GP6902200 | Bearing Turcite | 2 |
| 4 | BU5802084 | Back-up ring | 2 |
| 3 | BU4001500 | Back-up ring | 2 |
| 2 | B3G080P6000 | U-Cup | 1 |
| 1 | 504061 | Scraper | 1 |
| POS | PARTNUMBER | PARTNAME | QT |

Rotatable Demolition Shear

| | | | |
|--------------|--------------------|----|-----------|
| Page | 12 | of | 17 |
| Date | August 2010 | | |
| Product type | DLD-45 | | |
| Number | 500755-03 | | |

Overcentre valve



CAUTION!

Valve is equipped with high quality seals.
All valves and blanking ends are mounted according special instructions.

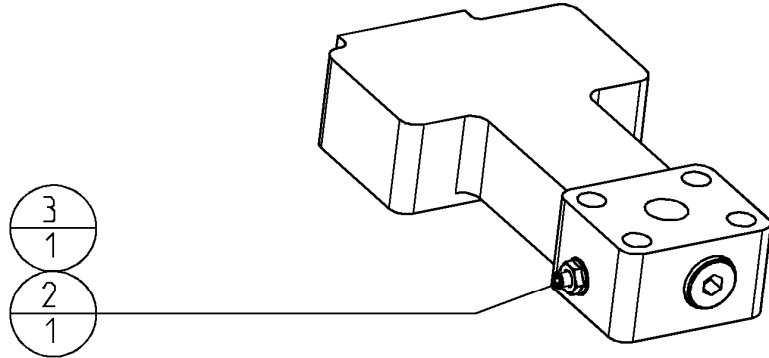
For further information contact your dealer.

| | | | |
|--------------------------|-------------------|-----------------|-----------|
| 9 | 504034 | Bonded seal | 3 |
| 8 | n.a. | Back-up ring | 2 |
| 7 | 504026 | Back-up ring | 2 |
| 6 | n.a. | O-ring | 2 |
| 5 | n.a. | O-ring | 2 |
| 4 | 504083 | O-ring | 2 |
| 3 | 504082 | O-ring | 2 |
| 2 | 504017 | O-ring | 2 |
| 1 | 500601 | O-ring | 3 |
| POS | PARTNUMBER | PARTNAME | QT |
| sealset 504080-01 | | | |

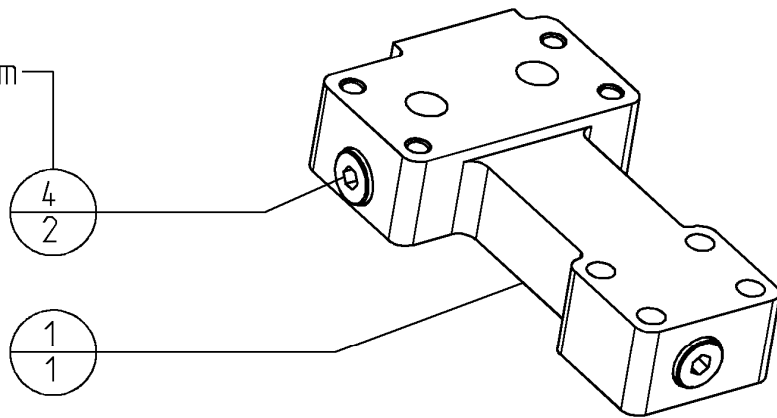
Rotatable Demolition Shear

| | | | |
|--------------|--------------------|----|-----------|
| Page | 13 | of | 17 |
| Date | August 2010 | | |
| Product type | DLD-45 | | |
| Number | 502559-00 | | |

Flange GP bottom



- Torque 150 Nm
- note A



note A

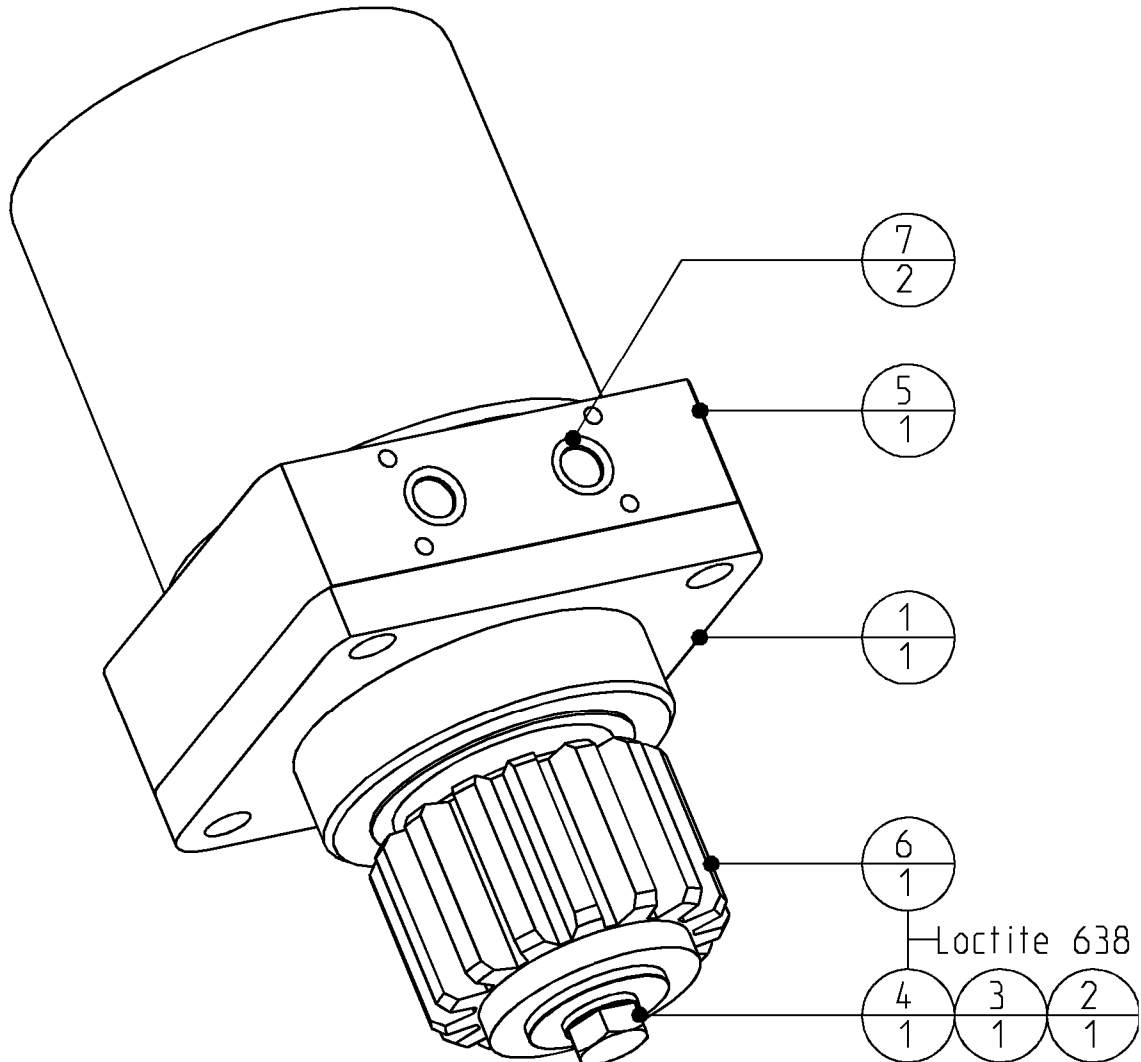
- # Degrease threads with brake cleaner.
- # Rub in- and outside threads in with Cyberbound TT62 by using a brush.
- # Clean seal from plug during screwing in.
- # A drying time from the glue of at least 1 hour needs to be respected before it has any contact with oil.

| | | | |
|------------|-------------------|-----------------------|-----------|
| 4 | 290058185 | Blanking end ISO 6149 | 2 |
| 3 | 121060762 | Nut Hexagon sealing | 1 |
| 2 | 502562 | Bleeding screw | 1 |
| 1 | 502560 | Flange - bottom | 1 |
| POS | PARTNUMBER | PARTNAME | QT |

Multi Quick Processor

| | | | |
|--------------|---------------------|----|-----------|
| Page | 14 | of | 17 |
| Date | October 2009 | | |
| Product type | DLD-45 | | |
| Number | 401201-00 | | |

Hydraulic motor GP

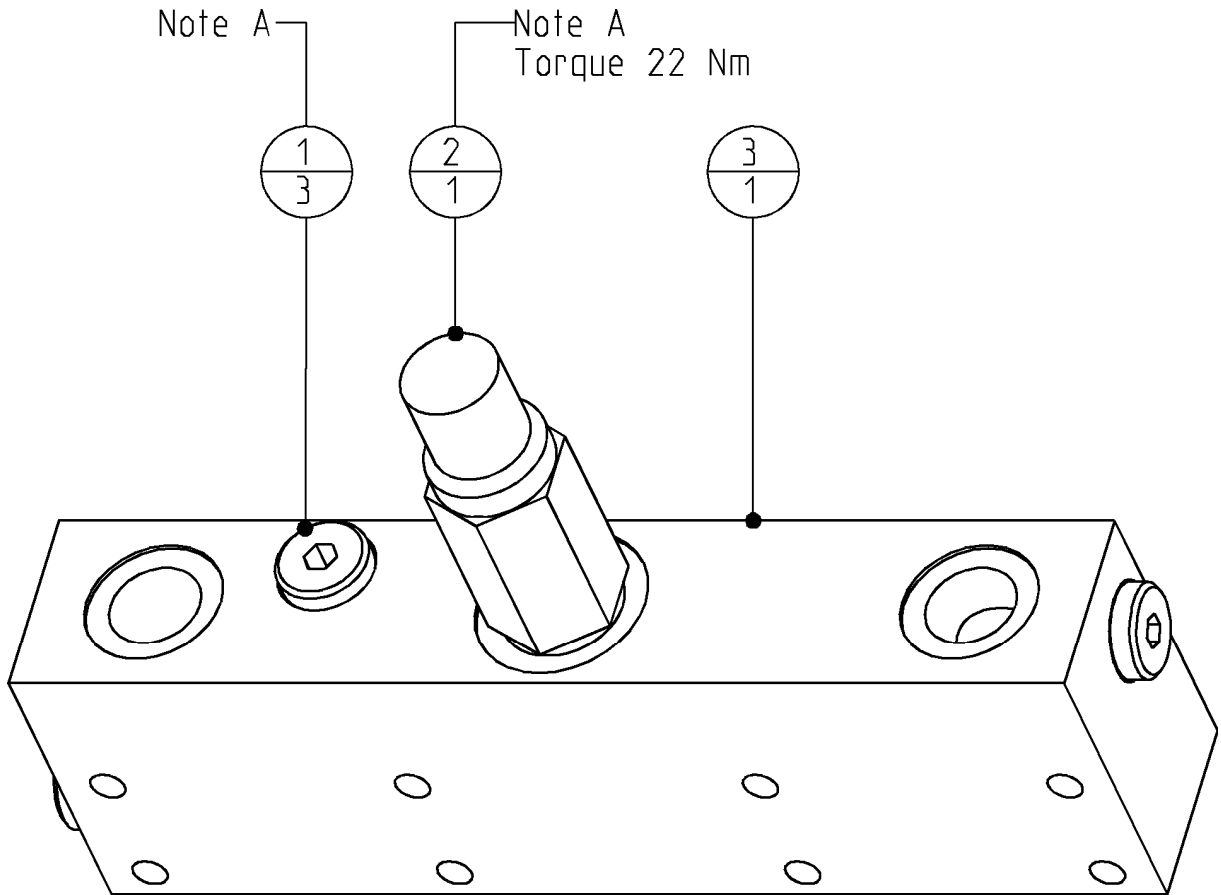


| | | | |
|------------|-------------------|-----------------|-----------|
| 7 | 504070 | O-ring | 2 |
| 6 | 500851 | Pinion | 1 |
| 5 | 500763 | Hydro-motor | 1 |
| 4 | 500131 | Bolts Hexagon | 1 |
| 3 | 500068 | Washer spring | 1 |
| 2 | 500062 | Washer con | 1 |
| 1 | 400593 | Motor-flange | 1 |
| POS | PARTNUMBER | PARTNAME | QT |

Rotatable Demolition Shear

| | | | |
|--------------|--------------------|----|-----------|
| Page | 15 | of | 17 |
| Date | August 2010 | | |
| Product type | DLD-45 | | |
| Number | 500758-03 | | |

Valve GP



Note A

- # Degrease threads with brake cleaner.
- # Rub in- and outside threads in with Cyberbound TT62 by using a brush.
- # Clean seal from plug during screwing in.
- # A drying time from the glue of at least 1 hour needs to be respected before it has any contact with oil.

| | | | |
|------------|-------------------|--------------------------|-----------|
| 3 | 500759 | Baseplate | 1 |
| 2 | 500757 | cross-over relieve valve | 1 |
| 1 | 500650 | Blanking end | 3 |
| POS | PARTNUMBER | PARTNAME | QT |

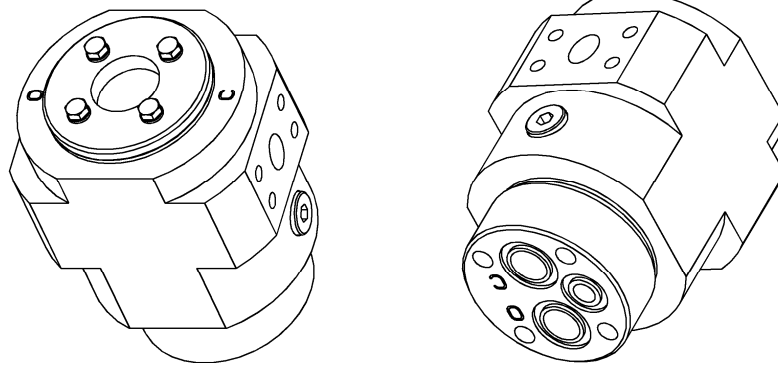
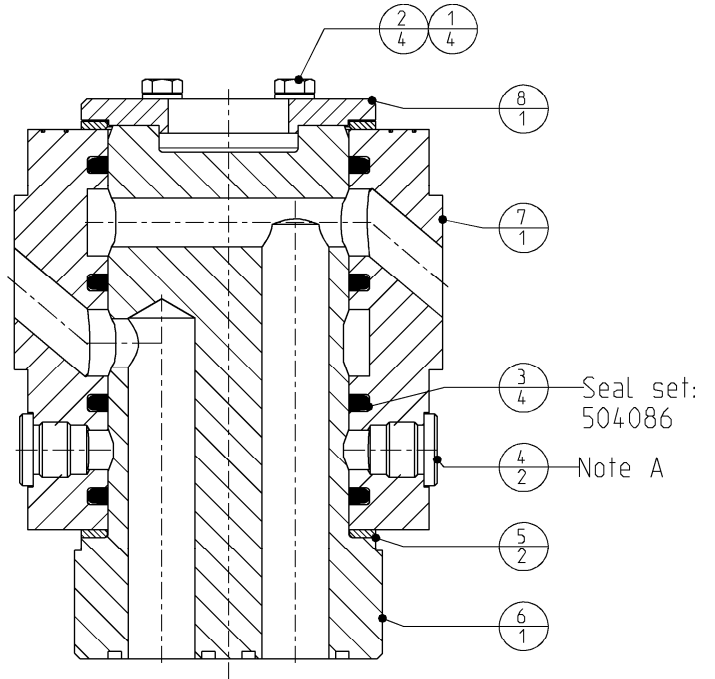
Rotatable Demolition Shear

| | | | |
|--------------|--------------------|----|-----------|
| Page | 16 | of | 17 |
| Date | August 2010 | | |
| Product type | DLD-45 | | |
| Number | 502286-02 | | |

Swivel GP

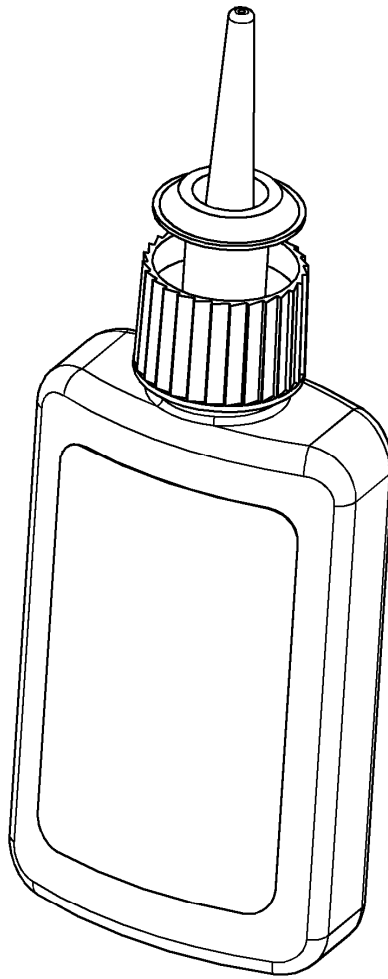
note A

- # Degrease threads with brake cleaner.
- # Rub in- and outside threads in with Cyberbound TT62 by using a brush.
- # Clean seal from plug during screwing in.
- # A drying time from the glue of at least 1 hour needs to be respected before if has any contact with oil.



| | | | |
|------------|-------------------|-----------------|-----------|
| 8 | 502289 | Cover | 1 |
| 7 | 502288 | Housing | 1 |
| 6 | 502287 | Stator | 1 |
| 5 | 500832 | Axial ring | 2 |
| 4 | 500652 | Blanking end | 2 |
| 3 | 500630 | Seal | 4 |
| 2 | 500105 | Bolts Hexagon | 4 |
| 1 | 500066 | Washer spring | 4 |
| POS | PARTNUMBER | PARTNAME | QT |

| | | | | |
|---------------------------------------|---------------------|--------------------|-----------|-----------|
| Rotatable Demolition Shear | <i>Page</i> | 17 | <i>of</i> | 17 |
| | <i>Date</i> | August 2010 | | |
| | <i>Product type</i> | DLD-45 | | |
| Chemical lock | <i>Number</i> | n.a. | | |



| | | |
|-------------------|--------------------------|-----------|
| 195050158 | Cyberbond TT62 Pumpgel | 1 |
| 506017 | Loctite 638 Flacon 50 ml | 1 |
| 506016 | Loctite 270 Flacon 50 ml | 1 |
| PARTNUMBER | PARTNAME | QT |